

Explanatory notes

for

The Sigrid Govenius Melsom Glass Negative Collection
Shoot by Henrik Govenius Melsom

in

China, Japan, and Korea

April 2017

UNI, Yoshikazu

unisan@m5.dion.ne.jp



File name DSC_3488_2.jpg
 Country Korea
 Subject Jangsaengpo [長生浦 장생포] whaling station of Nagasaki Hogeï [Whaling] Co. in Ulsan [蔚山 울산]
 Date 1904–1909
 Related image



Postcard of the Ulsan Station of Nagasaki Hogeï (Isana Bunko, Tokyo).

Reference

Nagasaki Whaling had established the Jangsaengpo whaling station in 1904 and merged with the Toyo Hogeï [Oriental Whaling] in 1909 (Akashi 1910: 239–240)



File name DSC_3488_2.jpg
 Country Korea
 Subject Jangsaengpo [長生浦 장생포] whaling station of Nagasaki Hogeï [Whaling] Co. in Ulsan [蔚山 울산]
 Date 1904–1909
 Related images



Postcard of the Ulsan Station of Nagasaki Hogeï (Isana Bunko, Tokyo)

Reference

Nagasaki Whaling had set the Jangsaengpo whaling station in 1904 and merged to Toyo Hogeï [Oriental Whaling] in 1909 (Akashi 1910: 239–240)



File name DSC_3543_2.jpg
 Country Korea
 Subject Mt. Kumgang [金剛山、금강산] from nearby Jangjeon [長箭、장진] whaling station
 Date
 Related images



Kaizo-sha. 1930



[Taiyo Fishery 80-year history compilation committee]. 1960.

Reference Mount Kumgang - Wikipedia https://en.wikipedia.org/wiki/Mount_Kumgang
 Note The funnel mark was deemed a Norwegian's.



File name DSC_3535_2.jpg

Country Japan

Subject Kosuge Slip Dock [小菅修船場跡], in Nagasaki [長崎]. One of the World Heritage "Sites site of Japan's Meiji Industrial Revolution: Iron and Steel Shipbuilding and Coal Mining." The ship is the whale catcher Main.

Date 1906–1909

Related images



In 1872, Nagasaki Library

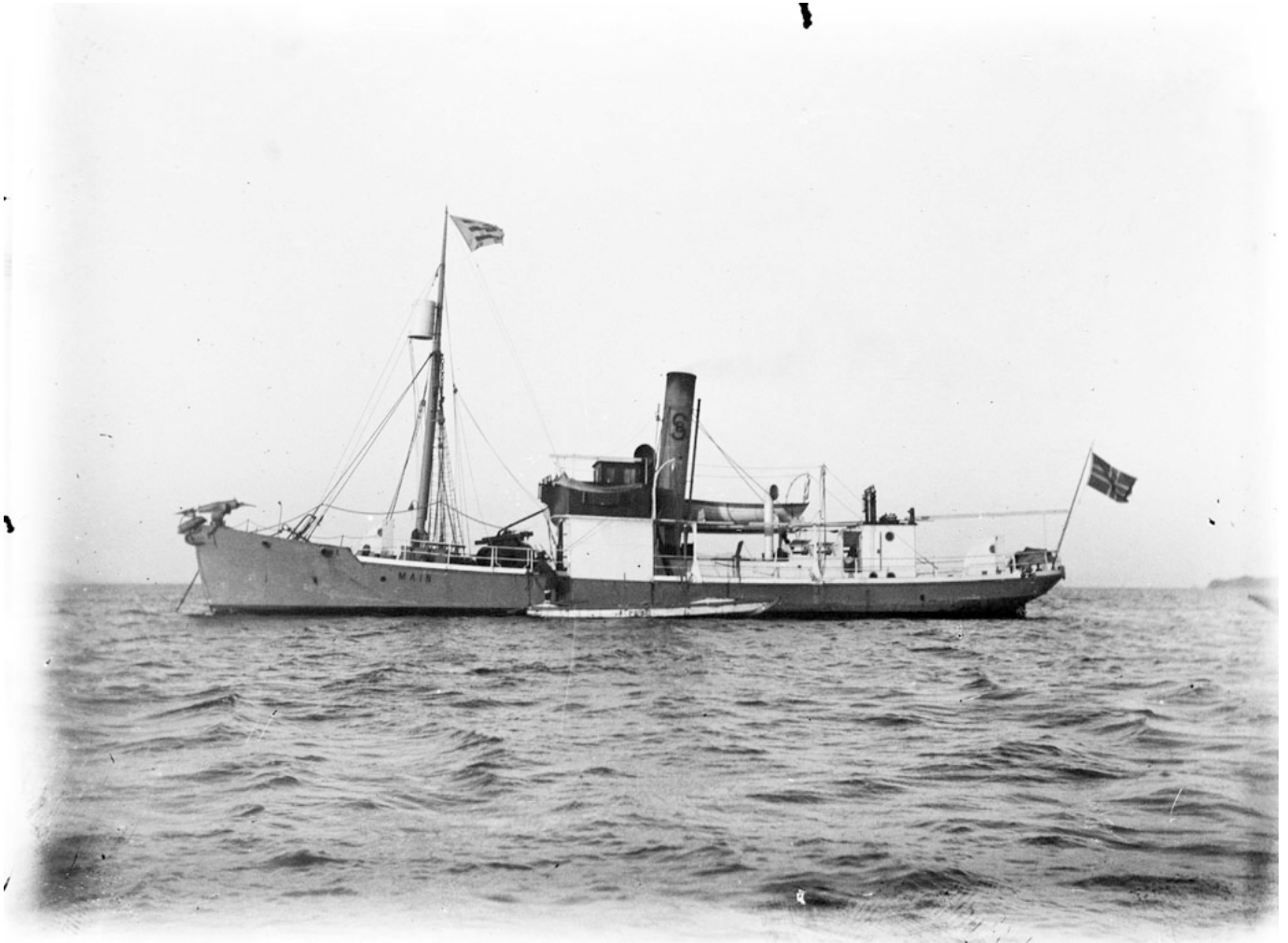


In 2017, by Uni

Reference The Main was chartered by the Nagasaki Hogeï for three years from 1906 (Shibuya 1967: 23)

Note Official website: Kosuge Slip Dock | NAGASAKI | STORY & SITES | Sites of Japan's Meiji Industrial Revolution.

<http://www.japansmeijiindustrialrevolution.com/en/site/nagasaki/component01.html>



File name DSC_3571_2.jpg

Country —

Subject Whale catcher Main

Date 1906–1909

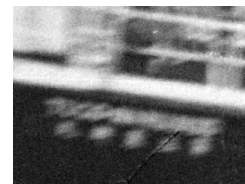
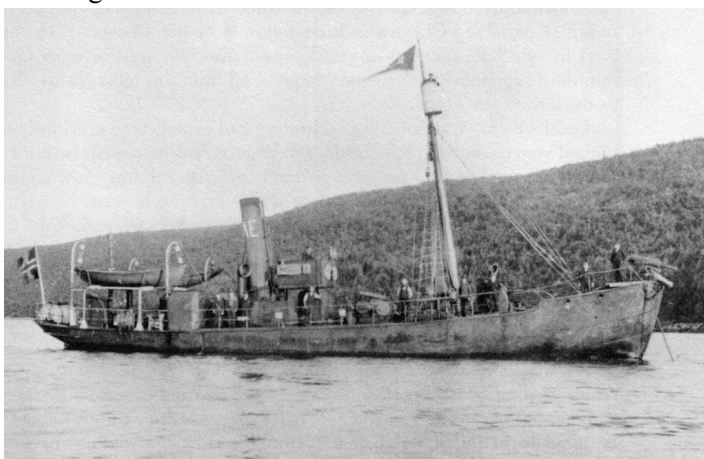
Related images

Reference The Main was chartered by Nagasaki Hogeï [Whaling] for three years from 1906 (Shibuya 1967: 23)

Note The flag with three horizontal lines on the mast was of Nagasaki Hogeï, but the funnel mark was deemed a Norwegian's.



File name DSC_3567_2.jpg
 Country Korea or Japan, Sea of Japan
 Subject Probably the whale catcher Togo-maru No.2 [第二東郷丸]
 Date 1906–1909
 Related images



Dickinson and Sanger (2005: 51)
 are written from right to left.

Magnified image of the upper photo. The Chinese characters

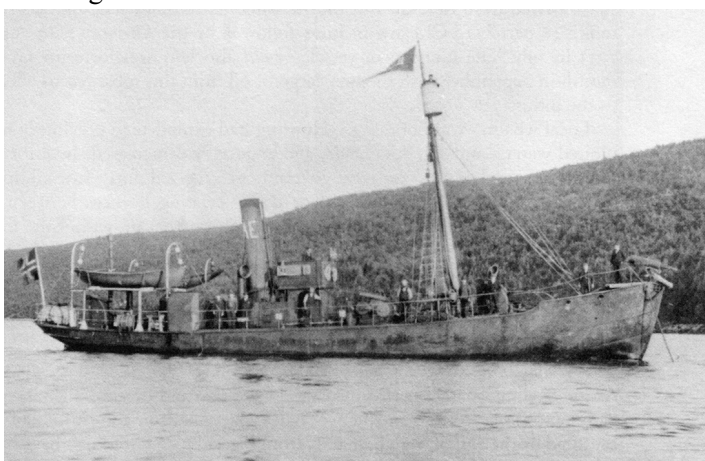
Reference

Nagasaki Hogeï purchased Humber and renamed it Togo-maru No.2 in 1906 (Shibuya 1967: 23).

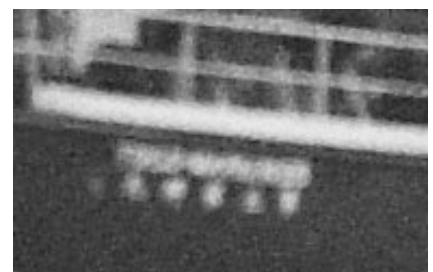
Note The funnel mark with three horizontal lines was of Nagasaki Hogeï [Whaling]. They had two catchers with five character names, 第一東郷丸 and 第二東郷丸. The sign of the catcher in the images looks the 第二 rather than 第一.



File name DSC_3525_.jpg
 Country Korea or Japan
 Subject Probably the whale catcher Togo-maru No.2 [第二東郷丸]
 Date 1906–1909
 Related images



Dickinson and Sanger (2005: 51)
 written from right.



Magnified image of the upper photo. The Chinese characters

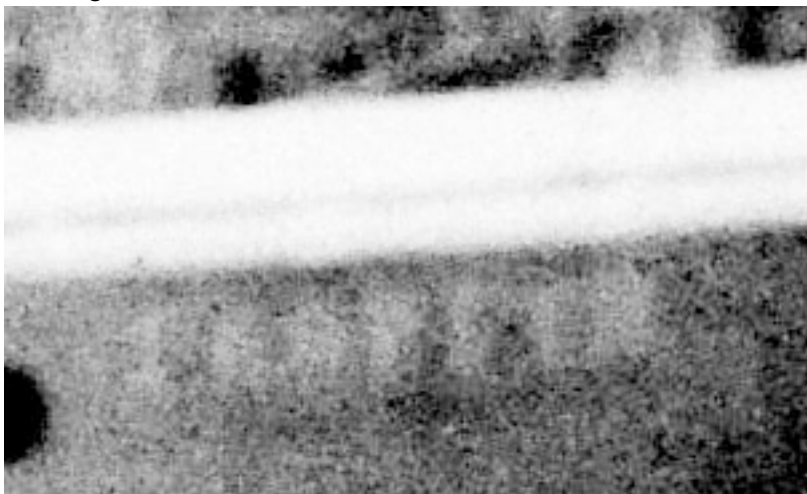
Reference

Nagasaki Hogeï purchased Humber and renamed it Togo-maru No.2 in 1906 (Shibuya 1967: 23).

Note The funnel mark with three horizontal lines was of Nagasaki Hogeï [Whaling]. They had two catchers with five character names, 第一東郷丸 and 第二東郷丸. The sign of the catcher in the images looks the 第二 rather than 第一.



File name DSC_3529_.jpg
 Country Probably Korea
 Subject Probably whale catcher Georgij [ГЕОРГИЙ]
 Date 1906–1909
 Related images



Enlarged its sign in the broadside

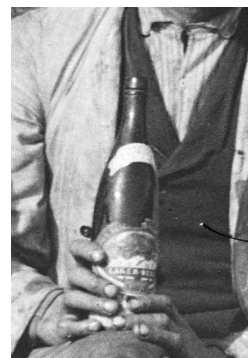
Reference

"Georgij" appears in Tønnessen (1967: 187, 188, 210).

Note



File name DSC_3579_.jpg
 Country Korea
 Subject Whale catcher Georgij [ГЕОРГИИ]
 Date 1895–1904
 Related images



Enlarged right corner of bridge, second letter form right is "I". Japanese brewery Kirin Beer

Reference

Crew of 12: captain. Russian; gunner, Norwegian; engineer. Russian; sailors, 8 Koreans; boy, Chinese (Watanabe 2006: 34–35, after Korean Marine Fishery Association Federation 1902. in Japanese).

"Georgij" appears in Tønnessen (1967: 187, 188, 210)

Note

Russian "I" was eliminated in 1918

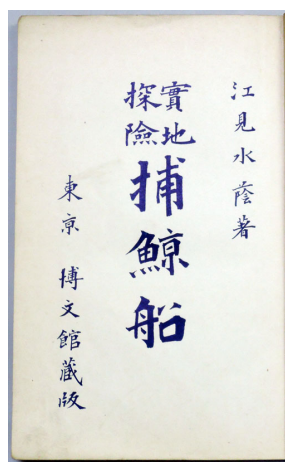
(Russian alphabet - Wikipedia https://en.wikipedia.org/wiki/Russian_alphabet).



| | |
|----------------|--|
| File name | DSC_3564_.jpg |
| Country | Korea |
| Subject | A whale catcher: perhaps the Georgij, Olga [Ольга], Main or Togo-maru No.2 |
| Date | — |
| Related images | |
| Rederence | Watanabe 2006 |
| Note | |



File name MELSOM_DSC_9931.tif, DSC_3347_2.jpg
 Country —
 Subject Probably Sigrid Govenius Melsom
 Date, estimate 1895–1907
 Related images



Emi, S. 1907. Jicchi Tanken Hogeisen [A Reportage of a Whaling Boat]. The caption said, "A beloved daughter of gunner Melsom".

Reference Emi (1907)

Note



File name DSC_3467_2.jpg
 Country Japan
 Subject Bronze statue of Nichiren Buddhist priest [日蓮聖人銅像], Fukuoka Prefecture
 Date 1904-
 Related images



In 2017, by Uni

Reference The statue was completed in 1904 (Official website).
 Note Official website: 銅造日蓮上人立像 | 文化財情報検索 | 福岡市の文化財
http://bunkazai.city.fukuoka.lg.jp/cultural_properties/detail/222

These images were shot in Korea 1/3



MELSOM_DSC_9936.tif



DSC_3399_.jpg



DSC_3437_.jpg



DSC_3460_.jpg



DSC_3324_.jpg, MELSOM_DSC_9914.tif



DSC_3313_.jpg, MELSOM_DSC_9905.tif



DSC_3346_.jpg, MELSOM_DSC_9929.tif

These images were shot in Korea 2/3



DSC_3344_.jpg, MELSOM_DSC_9928.tif



DSC_3315_.jpg, MELSOM_DSC_9940.tif



DSC_3558_.jpg



DSC_3556_.jpg



DSC_3552_.jpg



DSC_3431_.jpg



DSC_3546_.jpg



DSC_3393_.jpg

These images were shot in Korea 3/3



DSC_3341_.jpg, MELSOM_DSC_9926.tif



DSC_3352_.jpg, MELSOM_DSC_9935.tif



DSC_3355_.jpg, MELSOM_DSC_9938.tif



MELSOM_DSC_9934.tif



DSC_3357_.jpg, MELSOM_DSC_9939.tif



DSC_3314_.jpg, MELSOM_DSC_9904.tif



DSC_3319_.jpg, MELSOM_DSC_9910.tif



MELSOM_DSC_9933.jpg

These images were probably shot in Korea



DSC_3583_.jpg



DSC_3523_.jpg



DSC_3549_.jpg



MELSOM_B-9147.tif



MELSOM_B-9149.tif

These images were shot in China



DSC_3343_.jpg, MELSOM_DSC_9930.tif



DSC_3551_.jpg

This images were probably shot in China



DSC_3562_.jpg

These images were shot in Japan



DSC_3473_.jpg



DSC_3482_.jpg



DSC_3335_.jpg, MELSOM_DSC_9922.tif



DSC_3367_.jpg



DSC_3371_.jpg



DSC_3466_.jpg



DSC_3332_.jpg, MELSOM_DSC_9920.tif



DSC_3459_.jpg

Others



DSC_3559_.jpg



Enlarged around the life ring

This image was probably shot someplace other than Korea or Japan because the ship name was SHIN..., but there were no whale catcher whose name was started with the letters SHIN in ca. 1900.

Bibliography

- Akashi, K. 1910. Honpo no Noruwei-shiki Hogeishi [A History of Japanese Modern Whaling]. In Japanese.
- Dickinson, A. B. and Sanger, C.W. 2005. Twentieth-century Shore-station Whaling in Newfoundland and Labrador.
- Emi, S. 1907. Jicchi Tanken Hogeisen [A Reportage of a Whaling Boat]. In Japanese
- Kaizo-sha. 1930. Nihon Chiri Taikei 12 Chosen [Japan Geography 12 Korea]. Kaizo-sha. In Japanese.
- Shibuya, T. 1967. Hogeikaiko [Whaling]. private edition. In Japanese.
- Taiyo Fishery 80 year history compilation committee. 1960. Taiyo Fishery 80 year history.
- Tønnessen, J. 1967. Den Moderne Hvalfangsts Historie Bind 2.
- Watanabe, H. 2006. Hogeimondai no Rekishi Shakaigaku [A Historical Sociology of the Whaling Issue]. Toshin-do. In Japanese.